

Gilgamesh: A New Rendering in English Verse - Unveiling the Epic Tale of an Ancient King

: The Allure of Gilgamesh

In the annals of ancient literature, the Epic of Gilgamesh stands as a towering masterpiece, enchanting readers with its timeless themes, vivid characters, and profound insights into the human condition. Composed in ancient Mesopotamia around 2100 BCE, this epic tale of a legendary king has captivated countless generations.



Gilgamesh: A New Rendering in English Verse

by David Ferry

★★★★☆ 4.6 out of 5

Language : English

File size : 1819 KB

Text-to-Speech : Enabled

Screen Reader : Supported

Enhanced typesetting : Enabled

Print length : 110 pages



Gilgamesh, the protagonist of the epic, is a formidable warrior-king of the city of Uruk. His relentless pursuit of glory and immortality drives him on an extraordinary journey filled with adventure, encounters with divine beings, and a profound understanding of life's ephemeral nature.

A Fresh Perspective: A New English Verse Rendering

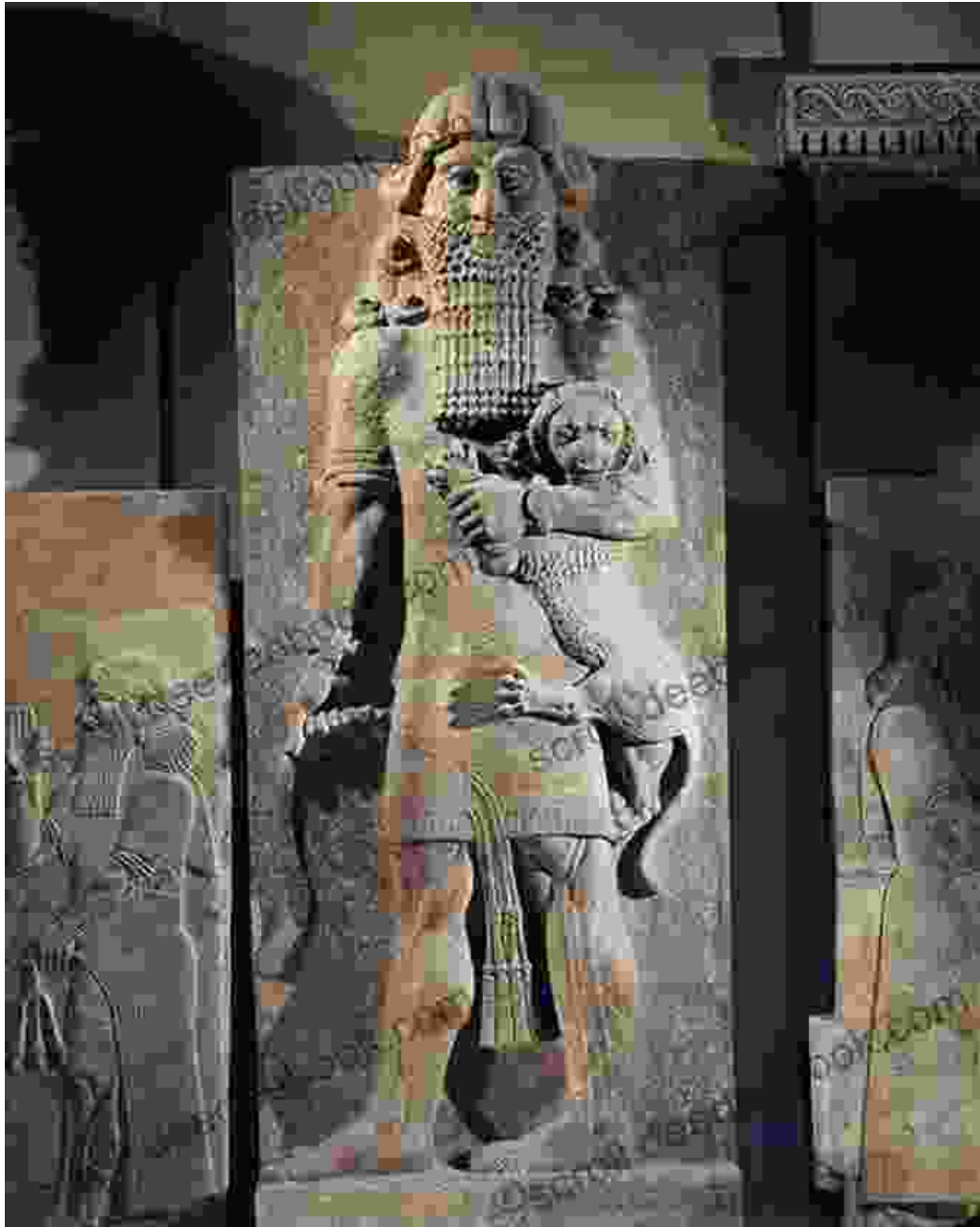
Now, award-winning poet Stephen Mitchell has crafted a captivating new rendering of Gilgamesh in English verse. Mitchell's lyrical and evocative language breathes fresh life into this ancient tale, preserving its timeless essence while making it accessible to contemporary readers.

Mitchell's rendering captures the epic's grandeur, its philosophical depth, and its enduring relevance. Through his masterful use of language, he illuminates the psychological complexities of Gilgamesh's character and the universal themes that resonate across cultures and time.

Unveiling the Characters and Themes of Gilgamesh

Gilgamesh: The Flawed Hero

At the heart of the Epic of Gilgamesh lies the enigmatic figure of Gilgamesh himself. A complex and flawed character, Gilgamesh embodies the human struggle for greatness and immortality. Mitchell's rendering portrays Gilgamesh's arrogance, recklessness, and vulnerability with both empathy and realism.



Enkidu: The Wild Man

Fate entwines Gilgamesh's destiny with Enkidu, a wild man who represents the untamed forces of nature. Mitchell's rendering vividly depicts their friendship, which challenges Gilgamesh's worldview and ultimately leads to a profound understanding of human mortality.

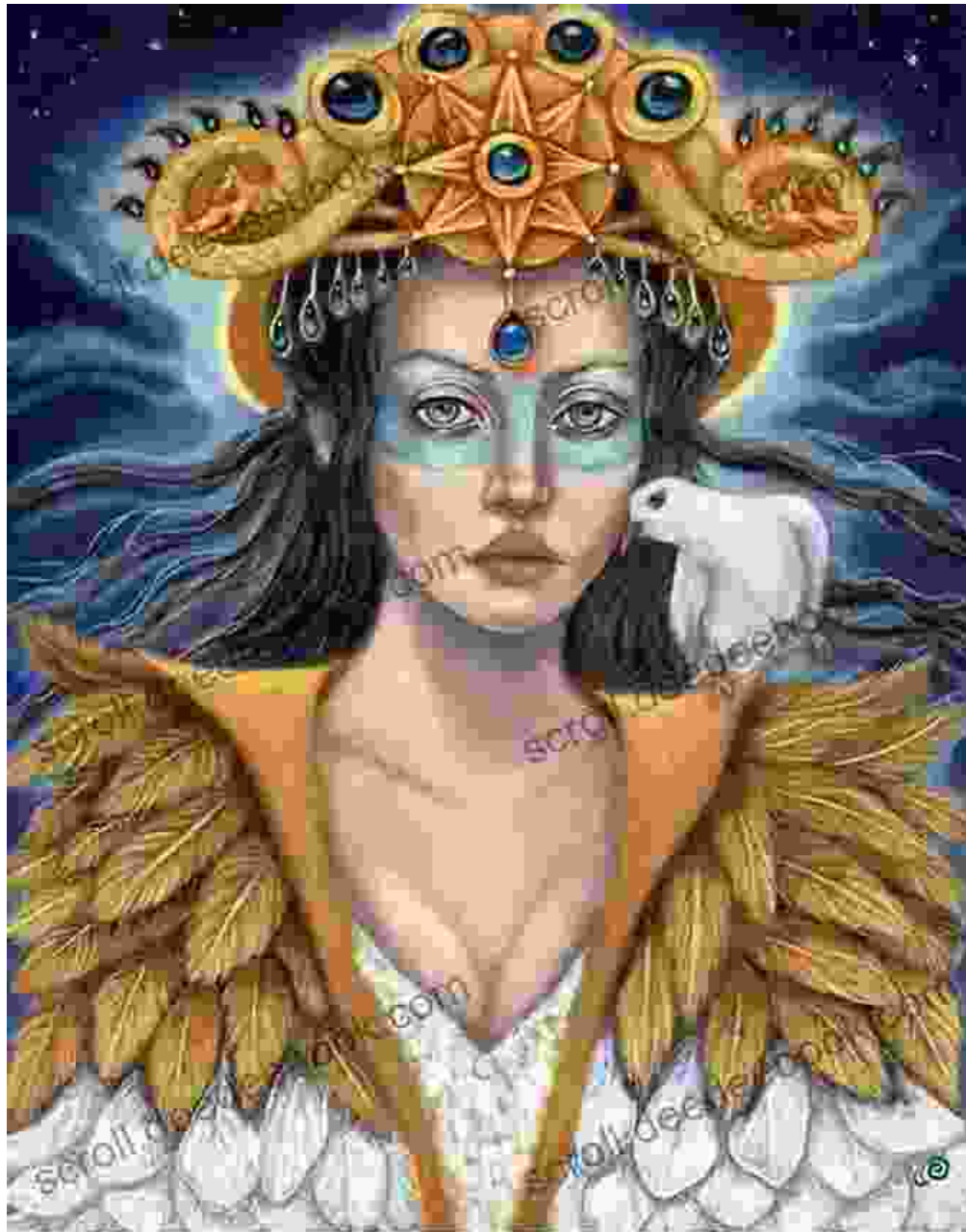


Gilgamesh and Enkidu, an unlikely duo, forged a deep friendship.

Ishtar: The Goddess of Love and War

The divine realm plays a pivotal role in the Epic of Gilgamesh. Among the gods, Ishtar, the goddess of love and war, presents a formidable challenge

to Gilgamesh. Mitchell's rendering captures her allure and her wrath, exploring the complexities of desire and the consequences of hubris.



Themes of Mortality and Immortality

The Epic of Gilgamesh grapples with profound themes that have resonated across cultures and time. Through Gilgamesh's quest for immortality,

Mitchell's rendering explores the human fear of death, the desire for legacy, and the ultimate acceptance of life's ephemeral nature.

The Search for Meaning

Beyond its epic adventures, the Epic of Gilgamesh also delves into the search for meaning and purpose in life. Gilgamesh's encounters with wise beings and his journey through the underworld illuminate the human desire for knowledge, connection, and the enduring power of love.

The Legacy of Gilgamesh

The Epic of Gilgamesh has left an enduring legacy that continues to inspire and captivate. Its influence can be seen in countless works of literature, art, and film. Mitchell's new verse rendering breathes fresh life into this ancient tale, ensuring that its timeless themes and characters remain relevant for generations to come.

Through its exploration of human nature, the search for immortality, and the enduring power of love, the Epic of Gilgamesh continues to resonate with readers of all ages. Stephen Mitchell's masterful rendering in English verse makes this ancient masterpiece accessible to contemporary audiences, allowing us to experience the epic's grandeur and wisdom anew.

: A Timeless Tale Retold

Stephen Mitchell's new rendering of the Epic of Gilgamesh is a testament to the enduring power of great literature. Through his lyrical and evocative language, Mitchell brings to life the epic's timeless themes, complex characters, and profound insights into the human condition.

Whether you are a longtime admirer of Gilgamesh or encountering this ancient tale for the first time, Mitchell's rendering offers a fresh and

accessible way to experience this literary masterpiece. The epic's themes of mortality, immortality, and the search for meaning continue to resonate with readers of all ages, reminding us of the enduring power of literature to illuminate our own lives.

So delve into the epic world of Gilgamesh, embark on his extraordinary journey, and discover the timeless wisdom that has enchanted readers for centuries.

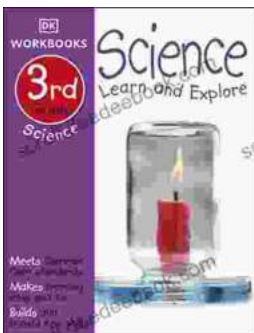


Gilgamesh: A New Rendering in English Verse

by David Ferry

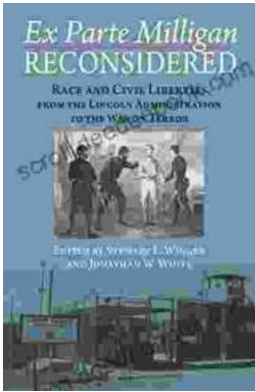
★★★★☆ 4.6 out of 5

Language : English
File size : 1819 KB
Text-to-Speech : Enabled
Screen Reader : Supported
Enhanced typesetting : Enabled
Print length : 110 pages



Dk Workbooks Science Third Grade: An In-Depth Exploration of Learning and Discovery

Science education plays a pivotal role in shaping young minds, fostering curiosity, critical thinking skills, and a lifelong appreciation for the natural...



Ex Parte Milligan Reconsidered: A Long Tail Analysis

Ex Parte Milligan was a landmark Supreme Court case that ruled that military tribunals could not try civilians in areas where the civil courts...